

PROVIDING A  
FULL BUILDING  
**ENVELOPE  
SYSTEM**

# AIR-SHIELD™

## AIR BARRIERS FROM W. R. MEADOWS

A COMPLETE LINE OF AIR/VAPOR AND LIQUID MOISTURE BARRIERS



W. R. MEADOWS®

**SEALTIGHT**

*A Family Company Since 1926*  
QUALITY...SERVICE...INTEGRITY

# FACT: Uncontrolled air leakage through the building envelope will affect the performance of the building materials within the wall assembly.

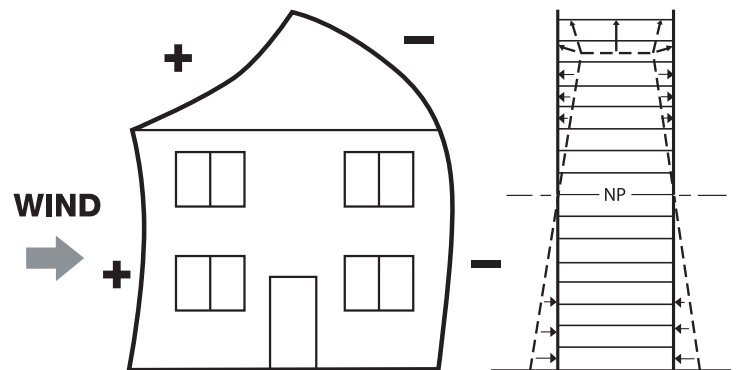
Not only do major investments in buildings deserve the very best protection available today, air barriers are now required in all new federal construction. To meet all of all of those concerns, W. R. MEADOWS brings you proven systems that prevent:

- Indoor air quality issues
- Inflated energy costs
- Mold growth
- Efflorescence
- Degradation of building components

## Make an energy-saving difference!

With the rising concern over energy consumption and the greenhouse effect, a complete AIR-SHIELD air and air vapor barrier system can provide all the components needed for making your building more energy efficient while combating indoor air quality issues.

All the more reason to look to W. R. MEADOWS. For over 90 years, we have built a coveted leadership reputation with architects, engineers and contractors developing and producing quality products for the construction industry. The kind of quality and performance that can protect your reputation as well. [Call us at 800-342-5976](tel:800-342-5976).



## How does air move through my building?

Air will move through the building if there is a pressure difference across the building envelope. As a result, any hole or penetration in the building envelope can allow moisture-laden air to move through the wall.

### Air is moved by:

- Building location and wind
- Stack (or chimney) effect
- Mechanical means (HVAC systems)

## IDEAL APPLICATIONS FOR W. R. MEADOWS AIR-SHIELD

- Cavity walls
- Masonry walls
- Precast concrete
- Cast-in-place concrete
- Interior and exterior gypsum board
- Styrofoam
- Primed steel
- Drywall
- Plywood



The complete line of AIR-SHIELD air barrier products is formulated to meet current specifications and regulations set forth by agencies such as the Air Barrier Association of America (ABAA), ASTM International, and the National Fire Protection Association (NFPA).

In addition, significant changes in the International Building Code (IBC), International Energy Conservation Code (IECC), and ASHRAE 90.1 now require the design of buildings to

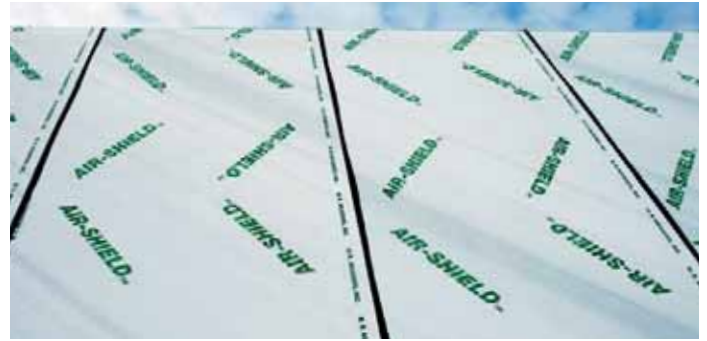
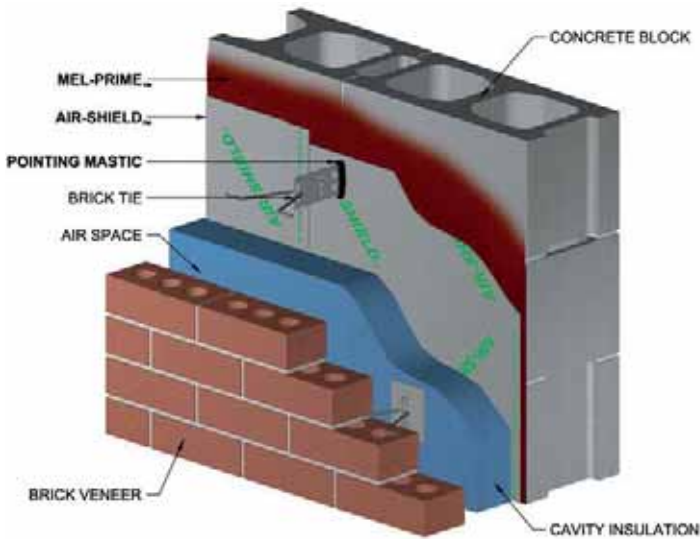
not only have increased thermal efficiency with the use of continued insulation, but also require the use of a complete air barrier system to address air leakage. AIR-SHIELD materials are designed and tested to meet the requirements of these current codes and standards.

For more information, visit [www.wrmeadows.com](http://www.wrmeadows.com) to view a complete list and also to learn the latest on air barrier code compliance.



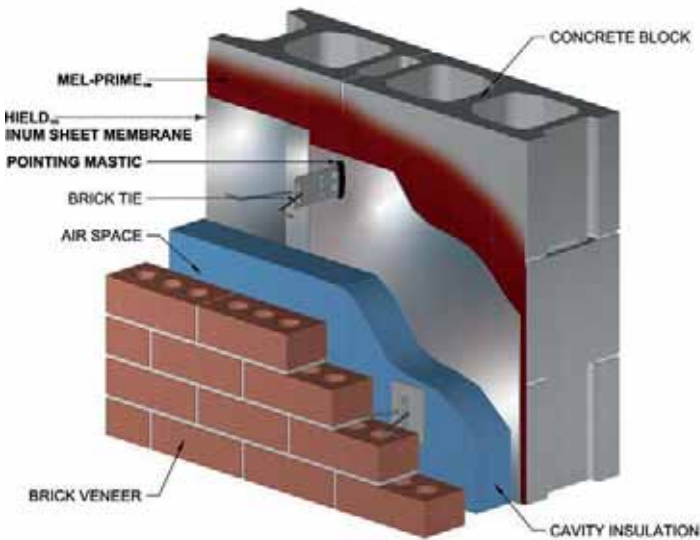
Designed and developed  
to work together as  
a complete air and air  
vapor barrier system.





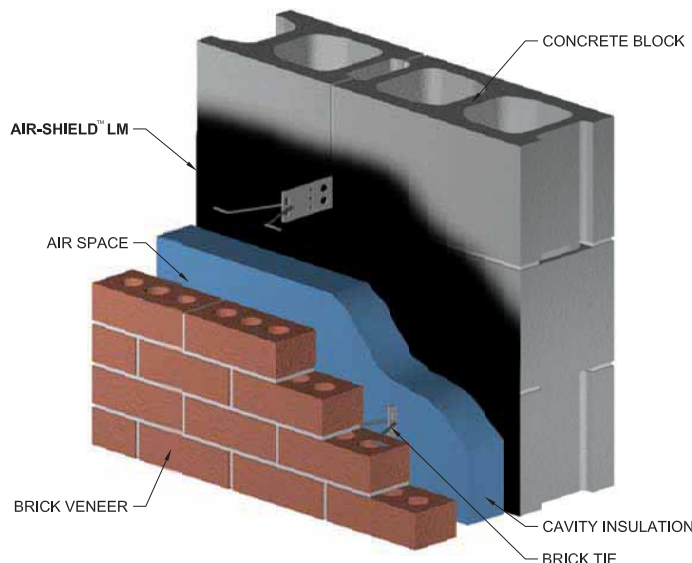
## AIR-SHIELD

self-adhering air/vapor and liquid moisture barrier is a part of a total system to complete the building envelope. It is a roll-type product that is nominally 40 mils thick. This unique, self-adhesive membrane, protected by a special release paper, is strong and durable. It remains flexible when surface mounted and will adhere to most primed surfaces at minimum temperatures of 40° F (4° C). [A low temperature version for applications between 20° F (-7° C) and 60° F (16° C) is also available.]



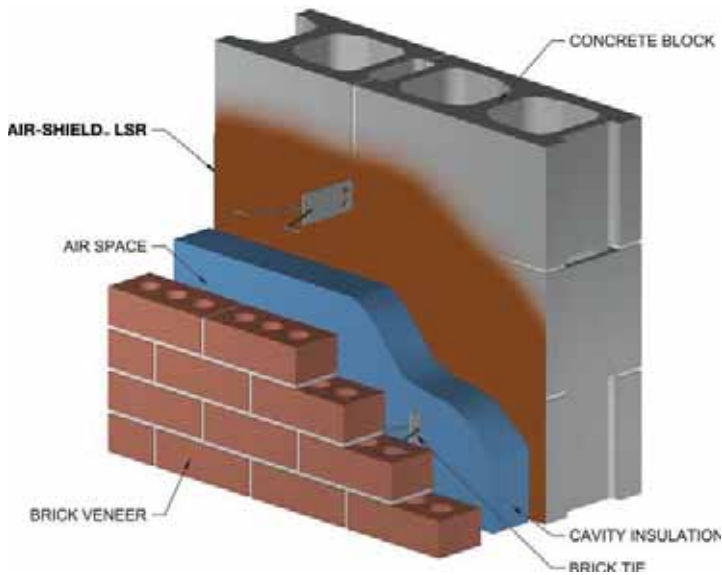
## AIR-SHIELD ALUMINUM SHEET MEMBRANE

self-adhering air/vapor and liquid moisture barrier is a roll-type product that is nominally 40 mils thick. The membrane's controlled thickness is fabricated from aluminum bonded to specially modified asphalt.



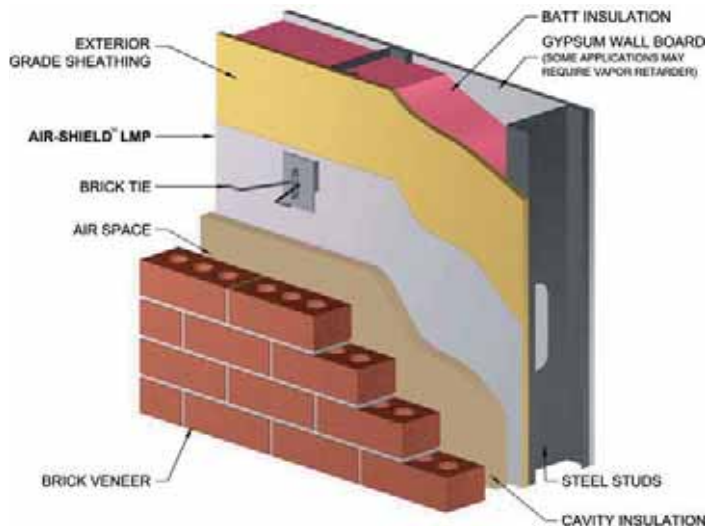
## AIR-SHIELD LM

is a liquid applied, water-based, polymer-modified air/vapor and liquid moisture barrier. AIR-SHIELD LM cures to form a tough, seamless, elastomeric membrane, which exhibits excellent resistance to air and moisture transmission. An all-season version is available for use in lower temps.



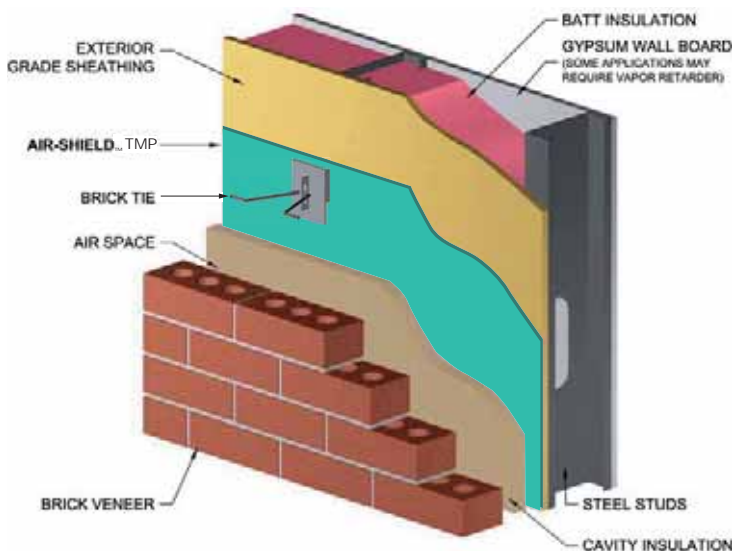
## AIR-SHIELD™ LSR

(liquid synthetic rubber) is an asphalt-free, single-component, synthetic rubber based liquid air/vapor and liquid moisture barrier. AIR-SHIELD LSR cures to form a tough, seamless, elastomeric membrane, which exhibits excellent resistance to air and moisture transmission.



## AIR-SHIELD™ LMP

is also a single component, liquid applied, vapor permeable air/liquid moisture barrier. AIR-SHIELD LMP stops the movement of air, while at the same time, allowing the passage of vapor. The product is designed for wall assemblies that need a vapor permeable air barrier.

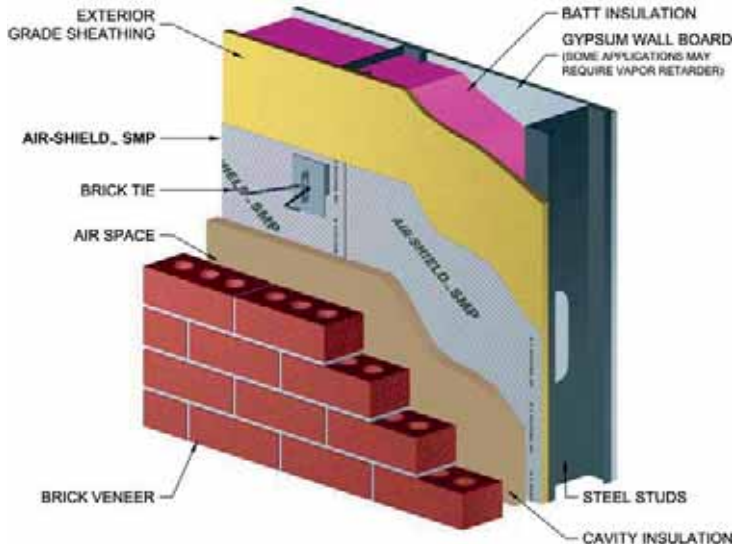


## AIR SHIELD™ TMP

is a water-based air/liquid moisture barrier that cures to form a tough, seamless, elastomeric membrane. When properly applied as a drainage plane, AIR-SHIELD TMP allows vapor to pass through; provides excellent resistance to air leakage; while prohibiting liquid water intrusion into the substrate. AIR-SHIELD TMP is suitable for both new construction and retrofit applications and may be applied to most common surfaces and integrated into various wall systems.



# NEW PRODUCT



## AIR SHIELD™ SMP

is a self-adhesive, vapor permeable, air/liquid moisture barrier that is designed to be fully bonded to the substrate without the use of an adhesive or primer. AIR-SHIELD SMP is a tough, durable membrane that exhibits excellent resistance to air leakage and liquid water intrusion, while at the same time allow vapor to readily pass through to allow the wall assembly to dry.



## ACCESSORIES



## MEL-PRIME™

MEL-PRIME is a solvent-based, ready-to-use adhesive for W. R. MEADOWS membrane systems. Formulations available are solvent-based, water-based, and for use in the Northeast.



## AIR-SHIELD LIQUID FLASHING

AIR-SHIELD LIQUID FLASHING is a high-quality, gun grade, low-odor, elastomeric, polyether, liquid-applied flashing and detailing membrane. It bonds to most construction materials, such as aluminum, brick, concrete, wood, vinyl, and exterior gypsum board.



## AIR-SHIELD ALUMINUM FLASHING

AIR-SHIELD ALUMINUM FLASHING provides protection against water infiltration in critical detail areas, such as window and door openings, deck-to-wall intersections, corner boards, wall-to-wall tie-ins, foundation sill plates, sheathing panel seams, under stucco finishes, masonry walls, and other non-roof detail areas. Suitable substrate types are wood, concrete, concrete masonry units (CMU), and exterior gypsum sheathing.



## AIR-SHIELD THRU-WALL FLASHING

AIR-SHIELD THRU-WALL FLASHING is a self-adhering, flexible membrane flashing. It is a roll-type product that is nominally 40 mils thick. This material is an air, vapor, and liquid moisture barrier.



## BEM

BEM is a one-component, cold-applied, non-slump waterproofing material that can be used for a variety of applications with building envelope products from W. R. MEADOWS. BEM cures to form a tough, flexible waterproofing membrane. BEM is a high quality moisture curing elastomeric waterproofing and sealing material.



## POINTING MASTIC

POINTING MASTIC is a pre-mixed, cold-applied, polymeric, single-component sealing compound. POINTING MASTIC was specifically designed to seal all exterior, vertical, and horizontal terminations. POINTING MASTIC can be used on all patches and overlaps in detail areas. Once applied, it provides excellent adhesive and bonding strengths. POINTING MASTIC cures to form a tough, flexible membrane.



## AIR-SHIELD 25 MIL FLASHING TAPE

AIR-SHIELD 25 MIL FLASHING TAPE is a self-adhering, flexible membrane flashing. It is a roll-type product that is nominally 25 mils thick. This material is an air, vapor, and liquid moisture barrier. When properly applied, the product reduces the risk of rot and mold development.



## TERMINATION BAR

TERMINATION BAR is a multi-purpose, preformed, professional way to attach a wide variety of construction waterproofing, drainage boards, and flashing systems.





*A Family Company Since 1926*  
QUALITY...SERVICE...INTEGRITY



**Visit our site for comprehensive information on waterproofing a building:**

- Product Listings
- Product Brochures
- Application Details
- Information Pages
- Installation Instructions
- Guide Specs
- Video Guides
- LEED Credit Calculation

[wrmeadows.com](http://wrmeadows.com)



**Use our LEED Credit Calculator:**

Determine LEED credits for documentation during the design stage and for submission upon project completion.

[calculator.wrmeadows.com](http://calculator.wrmeadows.com)



**Download the pdf**

Controlling Moisture Movement in Buildings: The Complete Approach. Get a full explanation of how moisture moves in buildings.

[wrmeadows.com/data/cat-mm03.pdf](http://wrmeadows.com/data/cat-mm03.pdf)



**Your quick link to waterproofing videos.**

800.342.5976  
P.O. Box 338, Hampshire, IL 60140

[wrmeadows.com](http://wrmeadows.com)  
[info@wrmeadows.com](mailto:info@wrmeadows.com)  
[#wrmeadows](https://www.instagram.com/wrmeadowsinc)

